

FFU 超薄风机过滤单元机组
FFU Equipment Fan Filter Unit

控制模式：群组/单台控制
电源模式：交流AC/变频直流EC
安装方式：水平/垂直
箱体可选材质：不锈钢/镀锌铝锌钢
用途：FFU超薄型过滤单元方便灵活，可以适用于多种净化设备上，如：可移动洁净房、洁净工作台、洁净操作箱、洁净走廊、洁净生产线等
Control mode: Group/Single control
Power mode: AC/EC
Installation way: Horizontal/Vertical
Cabinet material: Stainless steel / Aluminium-zinc alloy coated steel
Ultra-thin FFU is convenient and flexible, and can be applied to a variety of purification equipment, such as: mobile clean room, clean benches, clean operation box, clean corridor, clean production line, etc.



下拆式风机过滤单元
LOWER DETACHABLE FAN FILTER UNIT

风量：600m³/h, 1100m³/h, 2200m³/h
风速：0.45m/s±20%
洁净度：100级 (美国联邦标准209E)
HEPA效率：99.99% @ 0.3μm
噪声：53dB
壳体材质：不锈钢, 覆铝锌板, 钢板喷漆
电源：220V, 50Hz
Air volume: 600m³/h, 1100m³/h, 2200m³/h
Wind speed: 0.45m/s±20%
Cleanliness: Class 100 (US Federal Standard 209E)
HEPA efficiency: 99.99% @ 0.3μm
Noise: 53dB
Shell material: stainless steel, aluminum zinc coated plate, steel plate spraying
Power supply: 220V, 50Hz



BDFD 除尘除雾过滤箱
BDFD Dusting & Demist Filter Box

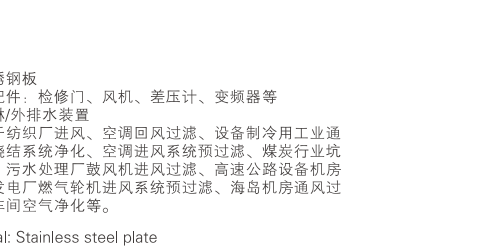
HHD 高效送风口
HHD HEPA Diffuser

过滤效率：H13-H14 (EN1822)
箱体：喷塑冷轧钢板
护面网：铝制喷塑/冷轧钢板喷塑/不锈钢
用途：用于高洁净度厂房和洁净室的送风系统的终端过滤，确保气流速度和防止回流
Filter efficiency: H13-H14 (EN1822)
Cabinet material: Spray cold rolled steel plate
Guard mesh: Aluminum plastic-coated / Cold rolled steel plastic-coated / Stainless steel
Apply to end filtration for air supply systems in high cleanliness plants and clean rooms to ensure airflow speed and prevent eddy currents

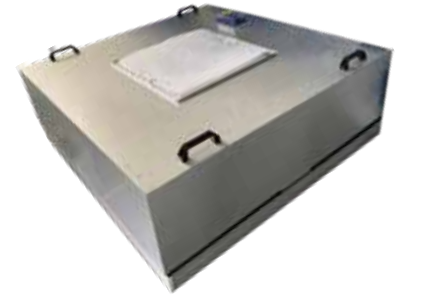


HLB 层流罩-GMP
HLB Clean Laminar Booth

洁净度等级：ISO Class 5
箱体材质：不锈钢304 (LCD液晶触摸屏控制)
噪声：≤64 db(A)
安装方式：悬吊/支架支撑
用途：主要用于电子、生物、医药、食品、仪器等行业的无尘无菌操作环境，以及其他需要提供局部高洁净度工作环境
Clean level: ISO Class 5
Cabinet material: Stainless 304 with LCD touch screen control
Noise: ≤64 db(A)
Installation: Suspension / Bracket support
Mainly used in the dust-free aseptic operating environment of electronics, biology, medicine, food, instruments and other industries to provide a local high clean working environment



箱体材质：不锈钢板
过滤箱体可选配件：检修门、风机、差压计、变频器等
附加功能：喷淋/外排水装置
用途：广泛用于纺织厂进风、空调回风过滤、设备制冷用工业通风、冶金行业烧结系统净化、空调进风系统预过滤、煤炭行业坑道大风量通风、污水处理厂鼓风机进风过滤、高速公路设备机房或露洞通风、发电厂燃气轮机进风系统预过滤、海岛机房通风过滤系统、粉尘车间空气净化等
Cabinet material: Stainless steel plate
Filter box components: Access door, fan, pressure gauge, frequency converter
Additional function: Spray washer / External drainage device
Widely used in textile mill entering the wind, air conditioning return air filter, industrial ventilation for equipment refrigeration, metallurgical industry sintering system purification, air conditioning air intake system prefilter, coal industry tunnel high air volume ventilation, sewage treatment plant blower air filter, highway equipment room or culvert ventilation, power plant gas turbine inlet system prefilter, ventilation filter system of machine room on island, dust filter of workshop, etc.



FFU 风机过滤单元
FFU Fan Filter Unit

控制模式：群组/单台控制
电源模式：交流AC
安装方式：水平/垂直
箱体可选材质：不锈钢/镀锌铝锌钢
用途：FFU系统方便灵活，可以适用于任何结构和各等级的洁净室。还可用于净化设备上，如：可移动洁净房、洁净工作台、洁净走廊等。
Control mode: Group/Single control
Power mode: AC
Installation way: Horizontal/Vertical
Cabinet material: Stainless steel / Aluminium-zinc alloy coated steel
FFU system is convenient and flexible, and can be applied to clean rooms of any structure and grade. It can also be used in purification equipment such as mobile clean rooms, clean benches, clean corridors, etc.



HFB 全不锈钢组合式过滤箱
HFB Whole Stainless Steel Combined Type Filter Box

箱体材质：不锈钢 (304/316L)
检修门：快开式高密封度
用途：广泛用于机械、家用电器、电子、化工化纤、纺织、卷烟、印刷、医药、食品、广播电视、科技馆、宾馆、体育馆、展览馆等需要净化空气的工业与民用建筑场所。适用于粉尘处理、粉尘车间空气净化、废气排放处理、化工气体净化、海上盐雾空气净化、大型计算机房及电器设备控制室空气净化
Cabinet material: Stainless steel (304/316L)
Access door: Quick opening, high tightness
Widely used in machinery, household appliances, electronics, chemical fiber, textile, tobacco, printing, medicine, food, radio and television, science museums, hotels, gymnasium, exhibitions and other needs clean air of industrial and civil construction. Sites for dust treatment, air purification of workshop dust, emissions treatment; air purification of chemical gas, sea salt mist, large computer room and electrical equipment control room



BACH 活性炭过滤箱
BACH Activated Carbon Filter Box

箱体材质：彩钢夹芯板/不锈钢板
过滤箱体可选配件：检修门、风机、差压计、变频器等
用途：广泛用于电子原件生产、蓄电池生产、酸洗作业、实验室排风、冶金、化工、医药、涂装、食品、酿造等废气处理
Cabinet material: Color-coated steel insulation sandwich board / Stainless steel plate
Filter box components: Access door, fan, pressure gauge, frequency converter
Widely used in electronic original parts production, storage battery production, pickling operations, laboratory exhaust, metallurgy, chemical, pharmaceutical, painting, food, brewing and other waste gas treatment

400-021-3388



Website



Facebook



Made In China



官网



微博



微信公众平台号

因洁净而生·为环境而铸
BETTER AIR BETTER LIFE

总部地址：上海市松江区G60科技城中心路1450号2#18楼
浙江工厂：浙江国家级平湖经济技术开发区兴工路1555号
邮编：201601 网址：www.hefil.com 邮箱：sales@hefil.com
客服：400-021-3388 总机：021-67632998

Headquarters Add:18th, T2, Phase II, Science and Technology Oasis, No. 1450, Zhongxin Road, Songjiang District, Shanghai

Zhejiang Factory:No. 1555, Xingong Road, Pinghu Economic & Technological Development Zone, Zhejiang Province

Post: 201601 Website: www.hefilter.com E-mail: echo@hefil.com
Custom Service Hotline: 400-021-3388 Switchboard: 021-67632998



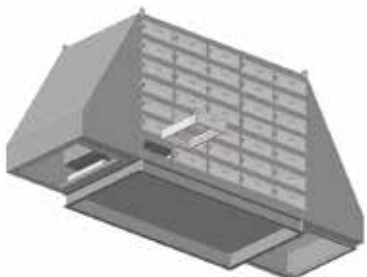
洁净设备系列-B
CLEAN EQUIPMENT SERIES-B

BETTER AIR BETTER LIFE



上海禾益净化设备制造有限公司
SHANGHAI HEFIL PURIFYING EQUIPMENT MANUFACTURING CO.,LTD.
禾益 (浙江) 环境科技有限公司
HEFIL-TECH(ZHEJIANG) ENVIRONMENTAL CO., LTD.

洁净室净化设备 Cleanroom Equipment



HADR 抽屉式废气过滤箱
HADR drawer type exhaust gas filter box

型号: HADR-40000 Model: HADR-40000
材质: 304 Material: 304
模块数: 70 Number of modules: 70
总通风量: 40600m³/h Total ventilation volume: 40600m³/h
总含炭量: 2450kg Total carbon content: 2450kg
可吸化学物质量: 600-800kg Weight of absorbable chemicals: 600-800kg
抽屉模块: 750x500x150 Drawer module: 750x500x150
模块风量: 580m³/h Module air volume: 580m³/h
额定风速: 0.43m/s Rated wind speed: 0.43m/s
阻力: ≤270Pa Resistance: ≤270Pa
含炭量: ~35kg Carbon content: ~35kg
初始吸附率: 98% Initial adsorption rate: 98%



HEFILSFF-X斜插式滤筒除尘器
HEFILSFF-X tilt-insert filter cartridge dust collector

净化效率高: 对于亚微米粒子高达99.99%的过滤效率
占地面积小: 采用新设计 缩小了除尘器的体积和占地面积
运行费用低: 运行阻力低, 能耗与运行成本极低
设计科学: 采用逆流式设计原理, 避免了粉尘二次污染滤材
操作简单、便捷: 采用全自动压缩空气脉冲清灰方式, 寿命更长
灵活性大: 可根据客户要求设计为防爆型或非防爆型
High purification efficiency: up to 99.99% filtration efficiency for submicron particles
Small footprint: new design reduces the size and footprint of the dust collector
Low operating cost: low operating resistance, very low energy consumption and operating cost
Scientific design: Adopt counter-flow design principle to avoid secondary contamination of filter material by dust
Simple and convenient operation: fully automatic compressed air pulse cleaning method, longer life
Flexible: can be designed as explosion-proof or non-explosion-proof according to customer requirements



HEFILMSF-H 脉冲自洁式过滤器
HEFILMSF-H Pulse Self-Cleaning Filter

电脑控制使过滤器可以自动清污, 免维护, 过滤效果好
三种自洁类型: 1、时间2、固定3、手动
简捷地方使用同样高效
阻力损失小, 低于250PA, 最大为600PA
占地面积小, 整体安装方便
安装便利, 外管可连接, 不影响安装占地
低耗电, 仅100-700W
空压量为0.1-0.4m³/min, 压力为0.6-0.7MPa
重量轻, 仅重2/3布袋的油
组件可长期使用, 正常环境下, 每2年更换一次
应客户的特别需求, 可以非标定做

Computer control so that the filter parts can be automatically cleaned, maintenance-free, good filtration effect
Three types of self-cleaning: 1, time 2, fixed 3, manual
The same high efficiency for simple place use
Small resistance loss, less than 250PA, maximum 600PA
Small footprint, easy overall installation
Convenient installation, external pipe can be connected, does not affect the installation area
Low power consumption, only 100-700W
Air pressure is 0.1-0.4m³/min, pressure is 0.6-0.7MPa
Low weight, only 2/3 of the oil of the cloth bag
Components can be used for a long time, under normal environment, replace every 2 years
Can be customized according to customers' special requirements



HEFILSFF-HY 焊接烟尘除尘器
HEFILSFF-HY Welding fume dust collector

采用滤筒过滤, 过滤面积大, 过滤效率高
PLC执行滤筒自动反吹清灰
吸气臂可360°旋转, 可空中上下、左右自由悬停
可选配2m、3m或4m柔性吸气臂, 吸气管采用耐磨、阻燃、耐磨复合材料, 使用寿命长
不同需求, 可配单臂、双臂C
配有四个脚轮(后两个脚轮配有脚刹), 移动灵活
High filtration efficiency with large filtering area by using cartridge filtration
PLC performs automatic back-blowing of the filter cartridge to clean the dust
Suction can be rotated 360 times and can hover up and down, left and right in the air
Optional 2m, 3m or 4m flexible suction arms are available.
The suction hose is made of temperature resistant, flame retardant and Long service life due to wear-resistant composite material
Single or double C for different needs
Equipped with four casters (the last two casters are equipped with foot brakes) for flexible movement



HEFILSFF-MC 滤筒式脉冲除尘器
HEFILSFF-MC Cartridge type pulse dust collector

滤筒微米级过滤, 创造洁净空间
除尘效率高: 操作维护方便
适合各种独立或多个产生尘点的除尘
适用范围: 化工制药、食品加工、冶金、铸造、碳素材料、机械加工、建材等行业、混合机、配料、拌料、振筛、粉碎机、称重、等除尘净化
Micron-level filtration of the cartridge, creating a clean space
High dust removal efficiency; easy to operate and maintain
Suitable for dust removal from independent or multiple dust producing points
Scope of application: chemical and pharmaceutical, food processing, gold treatment, casting Carbon materials, mechanical processing, building materials and other industries, mixers Sagging, mixing, vibrating sieve, crusher, weighing, dust purification, etc.



HEFILSFF-D 系列立式滤筒除尘器
HEFILSFF-D Series Vertical Cartridge Dust Collector

净化效率高: 对于亚微米粒子高达99.99%的过滤效率
占地面积小: 采用新设计 缩小了除尘器的体积和占地面积
运行费用低: 运行阻力低, 能耗与运行成本极低
设计科学: 采用逆流式设计原理, 避免了粉尘二次污染滤材
操作简单、便捷: 采用全自动压缩空气脉冲清灰方式, 寿命更长
灵活性大: 可根据客户要求设计为防爆型或非防爆型
High purification efficiency: up to 99.99% filtration efficiency for submicron particles
Small footprint: new design reduces the size and footprint of the dust collector
Low operating cost: low operating resistance, very low energy consumption and operating cost
Scientific design: Adopt counter-flow design principle to avoid secondary contamination of filter material by dust
Simple and convenient operation: fully automatic compressed air pulse cleaning method, longer life
Flexible: can be designed as explosion-proof or non-explosion-proof according to customer requirements



FFU 家用净化器
FFU Household Air Purifier

框架: 铝型材
能效等级: 1级
医用级HEPA-class 10
空气流量: 低档、中档、高档
电机类型: AC国产电机/EBM进口电机
功率: 80-120W
噪音: ≤52db(A)
用途: 家庭室内, 商业空间, 办公室, 会议室, 餐厅, 博物馆展厅等相对密闭的室内空间
Frame: aluminum alloy
Energy efficiency level: class 1
Medical grade HEPA: class 10
Air flow: low, medium and high grade
Motor type: AC domestic motor/EBM imported motor
Power: 80-120W
Noise: ≤52 db(A)
Apply to home interior, commercial space, office, conference room, restaurant, museum showroom relatively closed indoor space



HCB 洁净工作台
HCB Clean Bench

洁净度等级: ISO Class 5
工作台面材质: 优质冷轧钢板静电喷漆处理
工作台面: 不锈钢
控制系统: 采用触摸式电子控制面板
气流方式: 水平层流型/垂直层流型
用途: 主要用于电子、生物、医药、仪器等行业的高洁净度的操作环境, 是一种通用性较强的局部空气净化设备
Clean level: ISO Class 5
The workbench material: Electrostatically sprayed high-quality cold-rolled steel sheet
Countertop: Stainless steel
Control system: Touch electronic control panel
Airflow mode: Horizontal laminar flow / Vertical laminar flow
Mainly used in the high-purity operating environment of electronics, biology, medicine, instruments and other industries. It is a versatile local air purification equipment



HSP 移动式自净器
HSP Moveable Air Self-Purifier

洁净度等级: ISO Class 5
箱体材质: 优质冷轧钢板静电喷漆处理/全不锈钢
过滤系统: 超薄型无隔板高效过滤器
用途: 提供局部洁净工作环境, 具有无需安装、移动方便等优点, 适用于小范围内低洁净度要求的环境, 尤其适用于经常变换工作位置的工艺需要
Clean level: ISO Class 5
Cabinet material: Electrostatically sprayed high-quality cold-rolled steel sheet / All stainless steel
Filter System: Mini-pleat HEPA filter
Provides a local clean working environment, with the advantages of no need to install, easy to move, etc., suitable for a small range of low cleanliness requirements, especially suitable for process needs that often change the working position



HNP 负压称量罩
HNP Negative Pressure Weighing Booth

箱体材质: 镀锌钢板、不锈钢板、铝合金板强力风机国产电机或进口电机
过滤材料: 超细玻璃纤维
过滤效率: H13-U17
密封胶条: 双面粘密封胶条
耐温: <90℃
Casing material: Galvalume sheet, stainless steel or aviation aluminum
Fan: Domestic motor or imported motor
Filter material: Ultra-fine fiberglass or PTFE
Filter efficiency: H13-U17
Sealing gasket: Sealing gasket in double air supply sides
Temperature: Maximum 90°C in continuous service



HBIBO 袋进袋出安全更换过滤箱
HBIBO BAG-in / BAG-out Filter Housing

箱体材质: 不锈钢 304
箱体抗压力: ≥2500PA
过滤效率: 对0.3μm粒子去除率≥99.97%
过滤器检漏方式: 自动扫描检漏
用途: 广泛用于化学生物防护、生物及放射防护、医院隔离房间、制药设备、微电子环境、食品加工区域、生物研究、遗传与生物技术实验室、工业处理排放系统、化工处理设备、动物疾病研究实验室、放射性同位素元素处理设备、核电站、战略核设施、D.O.E设备、军事基地等
Cabinet material: SUS304
Compressive resistance of cabinet: ≥2500PA
Filter efficiency: ≥99.97% @ 0.3μm
Leak detection methods of filter: Automatic scanning for leak detection
Apply to the protection of chemical biological, protection of biological and radiological, isolation room in hospital, pharmaceutical equipment, environment of microelectronic, food processing area, bioresearch, laboratory of genetics and biotechnology, industry processing emissions system, equipment of chemical industry processing, laboratory of chemical industry, laboratory of animal diseases research, Equipment of radioisotope, nuclear power plant, nuclear facility, equipment of D.O.E, military Base etc.



HWS 不锈钢洗手池
HWS Hand-washing sink

304/316L不锈钢材质
拉丝/喷砂, 电解抛光处理
全满焊工艺
无边缝, 易清洁表面及坚固的设计
水槽数量可选
水槽可选
溢水洞可选
感应式水龙头
采用满焊圆角结构, 现场无需额外安装
易于清洁, 满足各类使用场景
304/316L stainless steel material
Brushed/sandblasted, electrolytic polished finish
Full full welding process
No edge seams, easy to clean surface and sturdy design
Number of sinks optional
Optional baffle
Overflow hole optional
Sensor type faucet
Full welded rounded corner structure, no additional installation on site
Easy to clean, meet all kinds of use scenarios

洁净室净化设备 Cleanroom Equipment



HRPB 防爆层流传递窗
HRPB Explosion-proof laminar flow transfer window

箱体材质: 采用不锈钢钢板, 表面进行抛光处理
控制系统: 采用电子联锁装置两门互锁
内壁设计: 内壁采用圆弧结构, 无死角
玻璃视窗: 双层玻璃, 表面平整, 不易积尘, 易清洁
密封方式: 点胶发泡一体成型密封胶, 有效提升密封效果
维护方式: 过滤器可单独从箱体进行拆卸和安装, 便于维护和更换
Box material: stainless steel plate, surface polishing treatment
Control system: electronic interlocking device is used to interlock the two doors
Inner wall design: the inner wall adopts rounded structure, no dead angle
Sealing method: double glass, smooth surface, not easy to accumulate dust, easy to clean
Sealing method: the sealing strip is made of foam, which can effectively improve the sealing effect
Maintenance method: the filter can be disassembled and installed from the box alone, easy to maintain and replace



HBO 洁净工作棚
HBO Clean Booth

洁净度等级: ISO Class 5 / ISO Class 4 / ISO Class 3
箱体材质: 优质冷轧钢板静电喷漆处理/全不锈钢
软帘: 普通PVC/防静电PVC
用途: 特别适用于车间内局部净化级别要求高的区域, 如流水线作业区域、高精度产品组装区
Clean level: ISO Class 5 / ISO Class 4 / ISO Class 3
Cabinet material: Electrostatically sprayed high-quality cold-rolled steel sheet / All stainless steel
Soft curtain: Ordinary PVC / Anti-static PVC
It is especially suitable for areas with high requirements for local purification in the workshop, such as assembly line operation areas, high precision product assembly area



BAXH 新风除尘过滤器
BAXH Dedusting Filter Box

箱体材质: 彩钢夹芯板
过滤箱体可选配件: 检修门、风机、差压计、变频器等
用途: 广泛用于机械、家用电器、电子、化工化纤、纺织、卷烟、印刷、医药、食品、广播电视、科技馆、宾馆、体育馆、展览馆等工业与民用建筑工程
Cabinet material: Color-coated steel insulation sandwich board
Filter box components: Access door, fan, pressure gauge, frequency converter
Widely used in industrial and civil construction projects such as machinery, household appliances, electronics, chemical fiber, textiles, cigarettes, printing, medicine, food, radio and television, science and technology museums, hotels, gymnasium, exhibition halls, etc.



HRF 自动卷绕式过滤器
HRF Automatic Roll Filter

过滤效率: G3-G4 (EN779)
框架: 喷塑冷轧钢板/铝合金/不锈钢
用途: 广泛用于纺织厂进风、空调回风过滤、设备制冷工业通风、冶金行业连续净化、空调进风系统预过滤、煤炭行业坑道大风量通风、污水处理厂鼓风机进风过滤、高速公路设备机房或涵洞通风、发电厂燃气轮机进风系统预过滤
Filter efficiency: G3-G4 (EN779)
Frame: Plastic-coated cold rolled steel / Aluminum alloy / Stainless steel
filtration, industrial ventilation for equipment refrigeration, metallurgical industry sintering system purification, prefiltration for air intake system in air conditioning, coal industry tunnel high air volume ventilation, sewage treatment plant blower air filtration, highway equipment room or culvert ventilation, power plant gas turbine inlet system prefiltering



HBX 过氧化氢无菌隔离器
HBX Hydrogen Peroxide Sterilizers

箱体材质: 舱体外壳和框架采用304不锈钢, 内腔及工作台面等采用316L不锈钢, 透明操作面板采用钢化玻璃
控制系统: PLC可编程控制系统
杀菌方式: 汽化过氧化氢灭菌系统
玻璃视窗: 黄光贴膜, 防紫外线、防静电
Cabinet material: cabin shell and frame using 304 stainless steel, inner cavity and work surface, etc. using 316L stainless steel, transparent operating panel using tempered glass
Control system: PLC programmable control system
Sterilization method: vaporized hydrogen peroxide sterilization system
Glass window: yellow light film, anti-UV, anti-static



HAS 风淋室
HAS Air Shower

洁净度等级: ISO Class 5 / ISO Class 6
箱体材质: 优质冷轧钢板静电喷漆处理、不锈钢底板/全不锈钢
喷嘴风速: ≥25m/s
用途: HAS系列风淋室是洁净厂房和装配洁净小室的配套设备, 用于吹除进入净化厂房的人员和携带物品表面附着的尘埃, 同时风淋室也起到气闸的作用, 防止未经净化的空气进入洁净区域; 是进行人身净化和防止室外空气污染洁净区的设备。
Cleanliness: ISO Class 5 / ISO Class 6
Cabinet material: Electrostatically sprayed high-quality cold-rolled steel sheet with stainless steel base plate / All stainless steel
Nozzle wind speed: ≥25m/s
HAS series air shower room is an auxiliary equipment for the clean workshop and the assembled clean room; it is used to blow away the dust attached to the surface of people and articles brought into the purification plant. The air shower also acts as an airlock to prevent unpurified air from entering clean areas, it is a device for personal purification and prevention of outdoor air pollution in the clean area